



KIMICA ALGIN

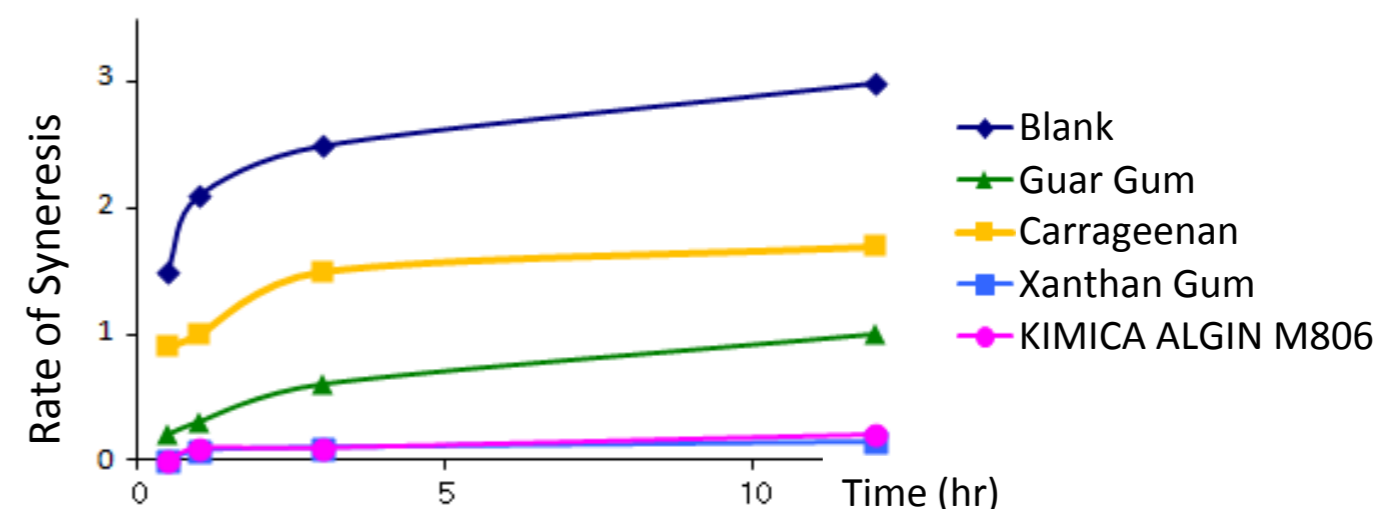
WHIPPED CREAM

(KIMICA ALGIN M806)

- Boost Shape Retention
- Prevent Syneresis



Aging Variation of Syneresis



Comparison with other Thickening Stabilizer

	Shape Retention	Mouth Feel	Rate of Syneresis
KIMICA ALGIN M806	○	○	○
Xanthan Gum	○	×	○
Guar Gum	○	△	△
Carrageenan	○	○	△
Blank	×	○	×

*Premix 0.2g of each thickening stabilizer with 1.5g of Sugar. Add it into 50ml of dairy cream.